

## The apartments at Riddergaarden Mountain Lodge

### Deluxe Apartment – 1 bedroom – 43–52 m<sup>2</sup> – From €130/person

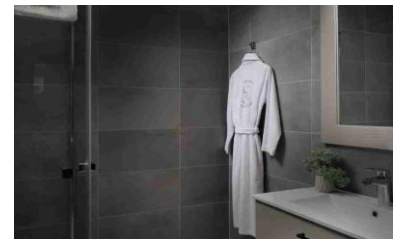


Welcome to the Deluxe Apartment, an elegant and spacious accommodation designed to offer you an unforgettable experience.

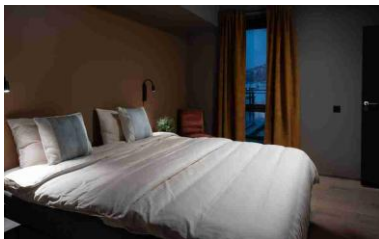
Ideal for both short and long stays, this apartment combines modern comfort with functional design. The perfect choice for those seeking space and quality during their stay.

#### Facilities:

- 1 high-quality double bed and 1 comfortable bunk bed
- Large living room with double bed, TV, and dining area
- Fully equipped large kitchen in the main living space
- Bathroom with underfloor heating and hairdryer
- Entrance hall with tiled floor and underfloor heating
- Heated underground garage



### One-bedroom apartment with alcove – 58 m<sup>2</sup> – From €140/person



Welcome to this spacious one-bedroom apartment with alcove, designed to provide a comfortable, practical, and warm stay.

This accommodation is ideal for families or groups looking for more space and flexibility, while enjoying modern amenities and a cosy atmosphere.

#### Facilities:

- 1 high-quality double bed
- 1 comfortable bunk bed or 2 double beds depending on configuration
- Spacious living room with sofa and dining table, perfect for relaxing after a day in the mountains
- Fully equipped kitchen for self-catering stays
- Bathroom with underfloor heating and hairdryer
- Entrance hall with tiled floor and underfloor heating
- Some apartments include a balcony
- Heated underground garage with lift access to all floors



### Suite – 2 bedrooms – 68 m<sup>2</sup> – From €155/person



Welcome to this luxurious 68 m<sup>2</sup> suite, ideal for travellers seeking space, comfort, and elegance during their stay.

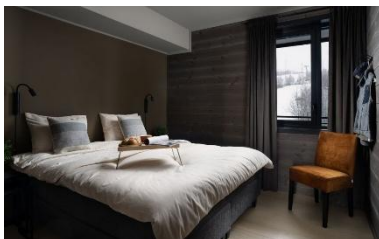
Perfect for families or groups, this suite combines modern facilities with a central location, offering a spacious interior and a private terrace designed for relaxation.

#### Facilities:

- 2 high-quality double beds
- Large living room with sofa, TV, and armchair, designed for relaxing moments together
- Fully equipped kitchen with everything needed for a comfortable self-catering stay
- Bathroom with underfloor heating and hairdryer
- Spacious entrance hall with tiled floor and underfloor heating
- Private terrace with views of the ski slopes
- Heated underground garage with lift access to all floors



### Family Apartment – 2 bedrooms – 65 m<sup>2</sup> – From €165/person



Welcome to this spacious 65 m<sup>2</sup> family apartment with a 10 m<sup>2</sup> terrace, located in the heart of Beitostølen.

This accommodation is ideal for families or groups seeking both comfort and convenience.

#### Facilities:

- 1 high-quality double bed
- 1 comfortable bunk bed
- Large living room with sofa, TV, and armchair, perfect for relaxing after a day in the mountains
- Large fully equipped kitchen, ideal for self-catering stays
- Bathroom with underfloor heating and hairdryer
- Spacious entrance hall with tiled floor and underfloor heating
- Large 10 m<sup>2</sup> terrace
- Heated underground garage with lift access to all floors



### Grand Master Suite – 3 bedrooms – 93 m<sup>2</sup> – From €175/person



Welcome to an unforgettable experience in this elegant and spacious suite, designed to offer maximum comfort and refinement.

This suite is ideal for both relaxation and social moments, with modern amenities meeting high standards of style and functionality.

#### Facilities:

- 1 high-quality double bed + 2 comfortable bunk beds
- Large living room with sofa, TV, and armchair
- Fully equipped large kitchen
- 2 bathrooms with underfloor heating and hairdryer
- Spacious entrance hall with tiled floor and underfloor heating
- Large 10 m<sup>2</sup> terrace
- Heated underground garage

