

## **Canada, Alberta Stay at Emerald Lake Lodge**

**From € 280  
2025**

**At Emerald Lake Lodge, disconnect from the hustle and bustle of modern life and fully recharge in the heart of nature.**



Immerse yourself in a haven of serenity where time seems to stand still. Here, WiFi is limited to the main lodge, there is no cell phone service, and the rooms are free of televisions—an invitation to reconnect with the essentials and your loved ones.

Steeped in history, this iconic lodge features century-old fireplaces and a stunning oak bar salvaged from a Yukon saloon dating back to the 1890s. Handcrafted with hewn timber and adorned with massive stone fireplaces, Emerald Lake Lodge offers an elegant dining room, tranquil reading areas, welcoming lounges, functional conference rooms, and a friendly games room.

Located on the shores of the renowned Emerald Lake in the heart of Yoho National Park, it provides a unique experience blending rustic accommodation with award-winning cuisine. From its upper and lower verandas, the panoramic views of the majestic mountain landscapes are simply breathtaking.

Few places in Canada so seamlessly combine exceptional dining, absolute tranquility, and total immersion in nature. Emerald Lake Lodge is more than a destination, it's an unforgettable experience.

## Accommodation



### Signature room

Recently renovated rooms where timeless decor meets unmatched luxury and relaxation. Immerse yourself in the sophisticated elegance of clean lines, various wood finishes, and chic furniture, all thoughtfully designed to provide ultimate comfort.

- 1 King-size bed or 1 King-size bed with a sofa bed
- Stone fireplace
- Spacious sitting area with armchairs
- Private balcony with views of the lake and wooded shoreline
- In-room mini-fridge and bar
- Built-in storage
- Bathrooms with one or two sinks and walk-in showers
- Nespresso coffee machine and kettle with a selection of teas



### Lodge room plus

Discover the perfect blend of comfort and elegance in our newly renovated Lodge Plus Rooms. These rooms provide a cozy and relaxing retreat in the heart of nature.

- **Bed Options:** 1 King-size or Queen-size bed
- **Warm Touches:** Stone fireplace and spacious sitting area with armchairs
- **Modern Bathroom:** Bright and spacious with a walk-in shower
- **Scenic Views:** Overlooking the beautiful Emerald Lake
- **Premium Beverages:** Nespresso coffee machine and kettle with a selection of fine teas

## Lodge room



Lodge rooms have one queen-size bed, one king-size bed or two double beds, a sitting area in front of the fireplace and a private balcony.

Room features

- 1 Queen-size bed, 1 King-size bed or 2 Double beds
- Wood burning stone fireplace
- Spacious sitting area with comfy chairs
- Limited number of pet friendly accommodations
- Nespresso Coffee Maker & Kettle with selection of teas

## Lake view room

Lake View rooms have one king-size bed, a spacious sitting area with a sofa in front of the fireplace and a private balcony overlooking the lake and treed shore.

- 1 King-size bed
- Wood burning stone fireplace
- Spacious sitting area with sofa
- Private balcony with views of the lake and treed shore
- Nespresso Coffee Maker & Kettle with selection of teas

## Emerald suite

Emerald suites are available in two configurations: studios or one-bedroom suites. Rooms have one queen-size bed, spacious sitting area with a sofa and chairs in front of the fireplace. Private half wrap-around balcony overlooking the lake and treed shore.

- 1 Queen-size bed
- Wood burning stone fireplace
- Spacious sitting area with sofa and chairs
- Nespresso Coffee Maker & Kettle with selection of teas
- Private half wrap-around balcony with views of the lake and treed shore

## Suite Point Cabin

The lodge's most exclusive suite – featuring a master bedroom with king-size bed and French doors leading to a spacious living area with a sofa couch. Room offers one-and-a-half bathrooms including a whirlpool bath, a dining area with refrigerator, wrap-around balcony and the premier view of Emerald Lake.

- 1 and ½ bathrooms with whirlpool bath
- 1 King side bed
- Dining area with refrigerator
- Spacious sitting area with sofa
- Wood burning stone fireplace
- Nespresso Coffee Maker & Kettle with selection of teas
- Private full wrap-around balcony with a premier view of Emerald Lake

## Restauration

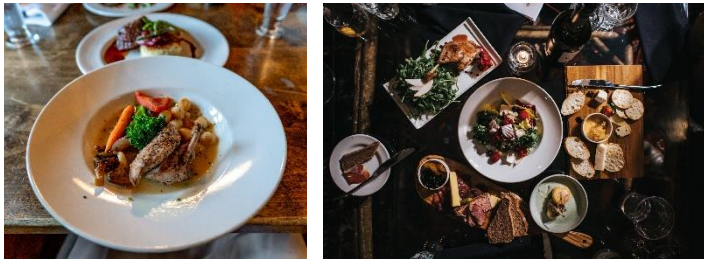
### Hearty and Historic

Our dining room, lounge and bar offer you CRMR's famed Rocky Mountain Cuisine – the roots of which go back to the hearty meals prepared by European mountain guides and the lavish Victorian cooking from early CPR rail cars.

Whether your days at Emerald Lake Lodge are spent adventuring in the mountains or curled up beside a roaring fire, the dishes served in the dining room are designed to nourish and comfort you during what promises to be a memorable stay.

### Mount Burgess Dining Room

With its inviting ambiance and signature Rocky Mountain Cuisine, every moment is crafted to delight your senses and leave you feeling connected to the beauty of the region.



### Local Brews & World-Class Spirit

Located in the main lodge, the Kicking Horse Lounge is the perfect place to unwind with local craft beers, world-class spirits, and outstanding cocktails. Enjoy shareable bites from a casual, share-friendly menu.



### Kicking Horse Coffee Bar

Start your day with a visit to the new Kicking Horse Coffee Bar, open daily from 7 a.m. to 11 a.m. enjoy drip coffee, lattes, and other favorites, alongside a selection of fresh, home-made pastries.

CRMR dining style is the artful assemblage of Canadian ingredients such as game meats, sustainable seafood, prairie-grown grains and locally sourced vegetables. Each of the restaurants owned and operated by Canadian Rocky Mountain Resorts offer a unique experience but are unified in the promise of a sublime dining experience complete with excellent service, and carefully chosen boutique wines.



We take incredible pride in our efforts of providing our guests with the very best that Canadian cuisine has to offer, and the ultimate farm-to-table experience that has become a popular dining trend around the world, especially here at home.

**Period from Jan01, to Dec31, 2025**

Price per night in Euros  
In Double Lodge Queen  
from € 280

**OUR RATES INCLUDE:**

- The night in Double Lodge Queen
- The breakfast

**Good to know :**

Room rates for other categories are available upon request.